

4

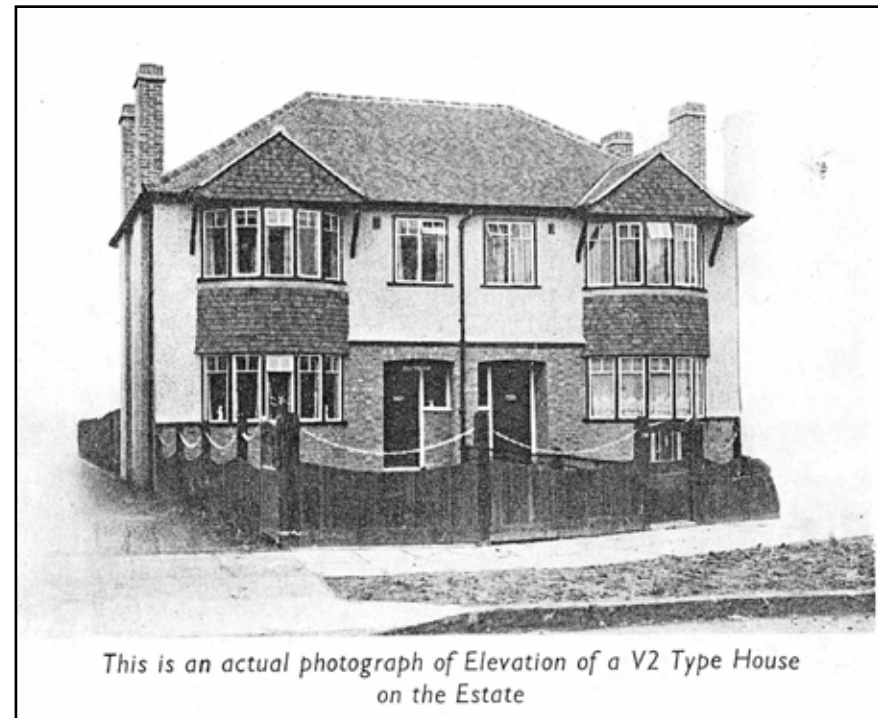
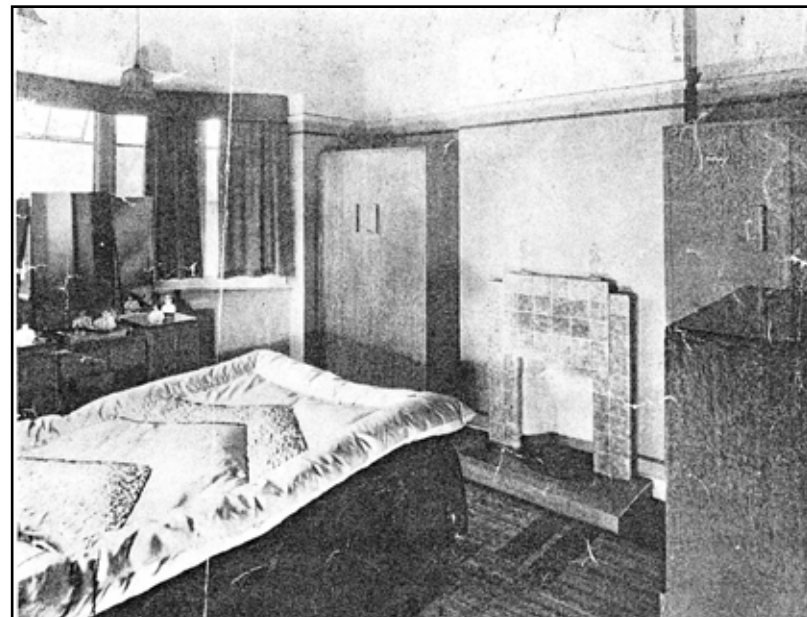
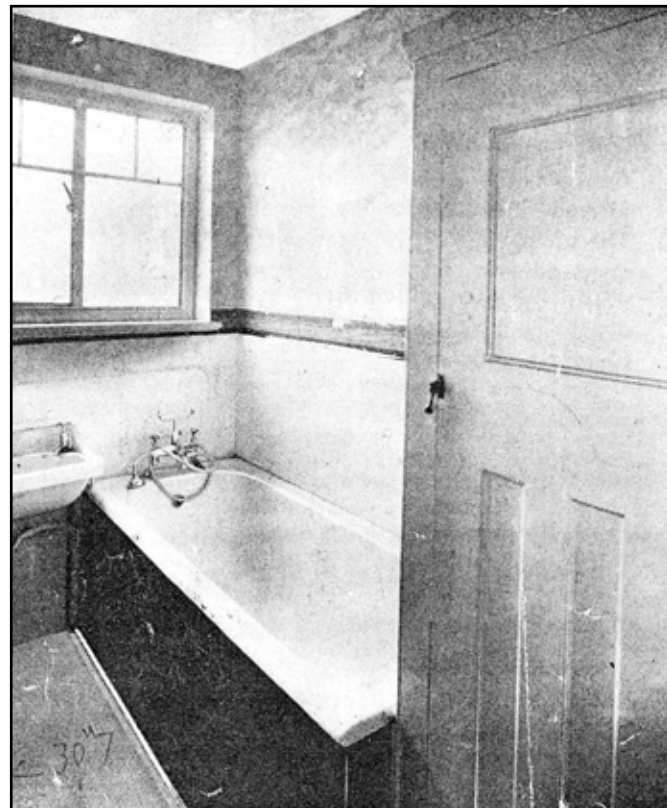
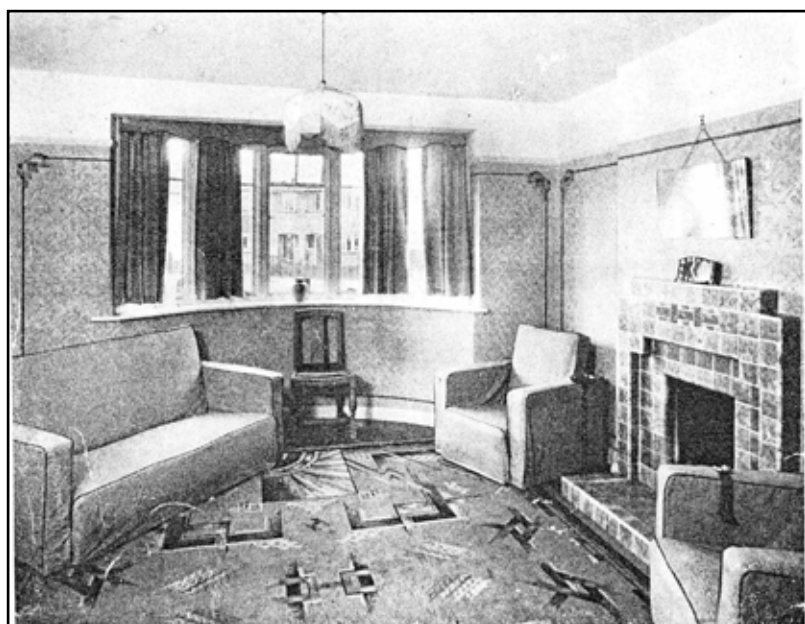
THE MERTON PARK ESTATE

This Estate, extending over 90 acres, of which Messrs. H. W. Selley, Builder, Limited, are Builders and Sole Selling Agents, has given them ample scope for carrying out their usual procedure of retaining wherever possible the beautiful trees and natural features of the countryside. These and other points will recommend it at once to the man whose work lies in the City, but who prefers his home to be on the borders of the Country. The houses are absolutely unique in many ways, and the Estate itself, though only 30 minutes' train journey from London Bridge, and just outside the London Postal area, is most pleasantly situated.

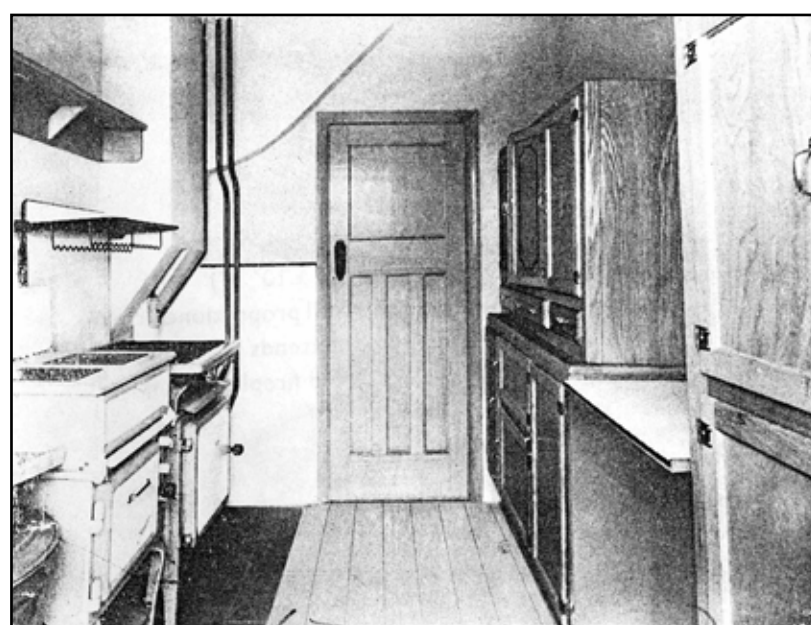
Builders' brochure



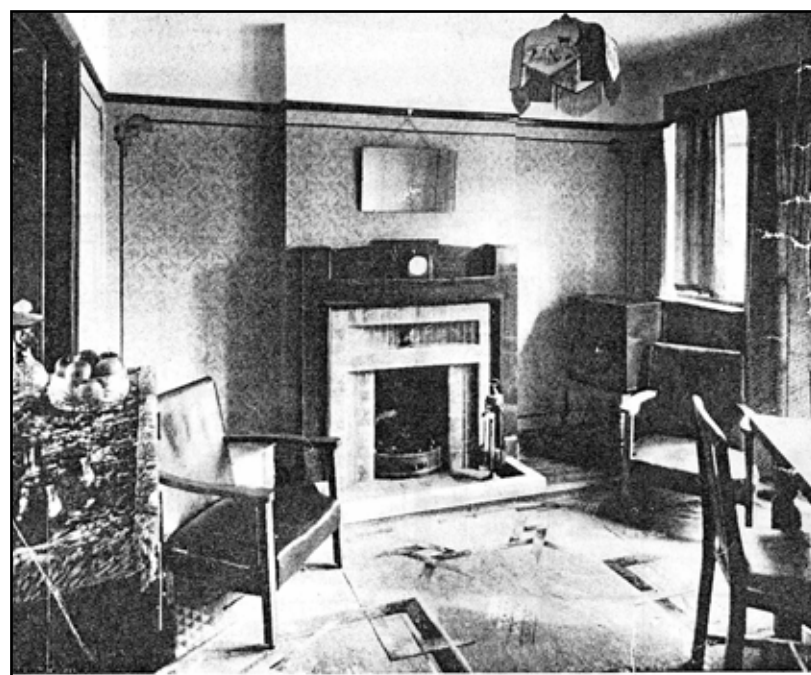
E. C. Type.



This is an actual photograph of Elevation of a V2 Type House on the Estate



Photographs from the builders' brochure



This Estate, lying quite high up, has a charming view over the well-known Morden Park Golf Course, which bounds it on its longest side, while another side is flanked by the glorious Cherry Wood, an actual portion of the Estate which Messrs. Selley's have now concluded arrangements whereby this heavily wooded beauty spot will remain forever as a permanent open space. The houses which are being built here are most unusual both in design and in the exceptional value given for money. They range in price from £670 to £775, and the simple fact that they are being sold very rapidly is the truest indication of their worth and of the tremendous interest which they have aroused.

Builders' brochure

We often came over while the house was being built, to see how it was progressing. The house was ready about a month before we were married, so we were able to bring the furniture in straight away.

Before we were married I used to come over on a Sunday morning and cook a meal for the two of us – on the Saturday I used to buy ¾lb frying steak, potatoes, and peas in their pods. I had to shell the peas, fry the steak and cook the potatoes ... George came over later, in time for lunch. This was my first attempt at cooking a meal!

There were no buses to Morden station in the early days, so I had to walk the mile to the station. When the bus service started it went as far as Churston Drive and ran along the bottom of our road, which was very handy.

Edith

Once we had selected our plot in Templecombe Way we went to the Show House to choose what fittings we wanted. Every house had a 'White Rose' coke boiler in the kitchen to heat the water, and a gas copper to boil clothes – no washing-machines. What couldn't be boiled had to be washed by hand. We had a big mangle to squeeze the water out of the washing, between wooden rollers – no spin-dryers either, or fridges or freezers or televisions. We bought a 'New World' gas cooker. There were fitted cupboards in the kitchen, with a working top that folded out to make a table. We could choose what colour tiles to have on the fireplaces, and what wood finishes – we chose a light-oak mantel surround in the dining room, and limed-oak for the staircase. George had been making a dining table, sideboard and bureau in light-oak and had the dining chairs made to match.

Edith

