

# BUILDING SUBURBAN MORDEN

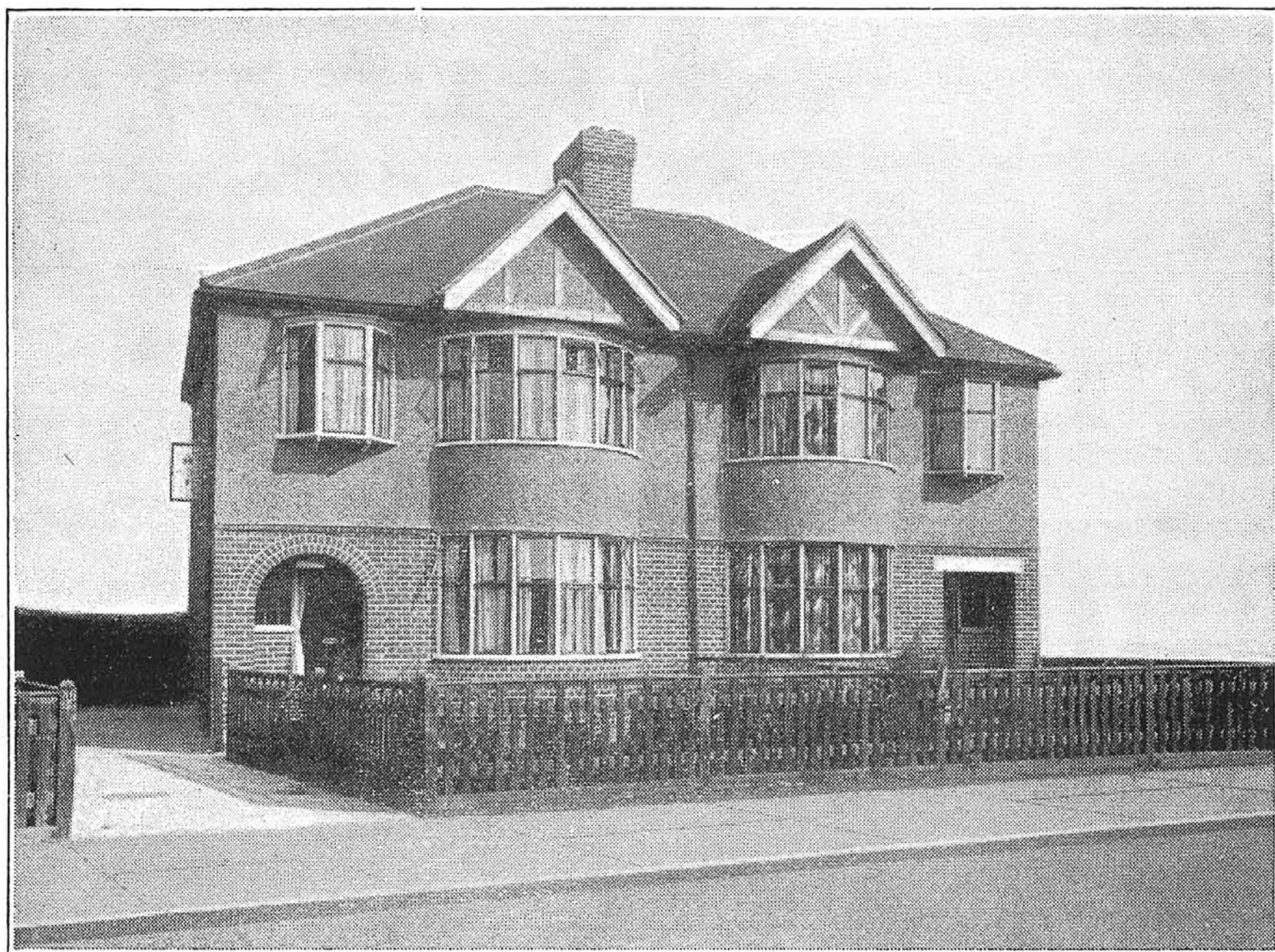
2

It was in 1932 that we moved into a council house, in what was to become the largest housing estate south of the Thames ... the St Helier Estate. It must have been Utopia for my parents to find themselves the proud tenants of a three-bedroom council house, with electric lights which came on at the touch of a switch, and power points, which meant that my father could plug in his newly-bought radiogram, housed in a large freestanding walnut cabinet.

I got a lot of pleasure from it as I grew up, playing my 78rpm records. The radiogram was actually a very modern innovation as most people had little radios run by batteries called accumulators, which were topped up much like our car batteries used to be.

Ron R

## MODERN HOMES on the Kingsley Estate, South Merton & Monkleigh Road Estate, Morden.



Monkleigh Road Estate.

High-class Houses are now being built on the Monkleigh Road Estate, Merton. They are conveniently situated in close proximity to Morden Underground Station, and within easy reach of bracing Epsom Downs and some of the finest scenery in Surrey.

Houses are priced as follows :—

Centre Houses	£695
End Houses	£750
Semi-Detached Houses	£775
Garages Extra from	£25

Full particulars may be obtained from :—

Messrs. H. COPP & SON, 146, Mostyn Rd., Merton Park, S.W.19.

Telephone : LIBERTY 1152.

You are invited to inspect the Furnished Show House, which is always open. Sundays included.

32

*Advert from a 1930s' Guide to Merton and Morden*

There were two blocks of 19th-century cottages in Garth Road towards the London Road end.

There was space between the blocks, and after the second block, for their allotments, where most people grew their own vegetables.

Opposite there were fields as far as you could see. Further down Garth Road past the Pyl Brook there was a block of cottages called Briar Cottages.

In 1935 some land between the brook and Briar Cottages was sold for building, and the house where I now live was built. My husband's parents bought it for £5 deposit and £3-1-11 a month repayments.

Betty



Morden Underground station opened in 1926, followed by the arrival of many small builders, seeking patches of land for the hundreds of houses which would be required.

Among them were my father and grandfather, starting with a few houses in Poplar Road, and going on to build more in Martin Way, Hillcross Avenue, Arundel Avenue, Leamington Avenue, Camborne Road, and a row of shops in Martin Way.

Muriel

I lived with my father and grandmother in Garth Road, but we moved into Tudor Drive after the War, soon after the houses were built.

Gladys

