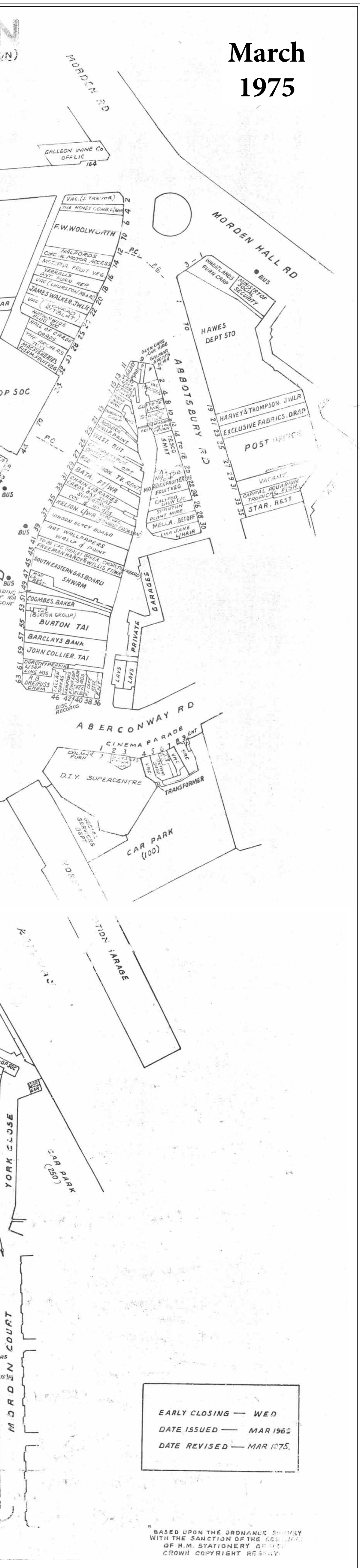


Survey of shops 1975



March
1975

15

When I was 15 I worked I worked half day on Saturdays at Hawes Department store, selling baby clothes and children's clothes. I loved it. I spent my first Saturday's wages on a Cream Puff face powder from the Co-op across the road.

Jeanne



7-19 London Road June 1971 (Bill Rudd)

Gilbey's opened at 11 London Road in 1934. It specialised in accessories to the Men's Outfitters – jerseys, pullovers, shirts, ties, belts, underwear, socks and handkerchiefs. It moved to 32 Crown Lane [right] in 1998.

Bill

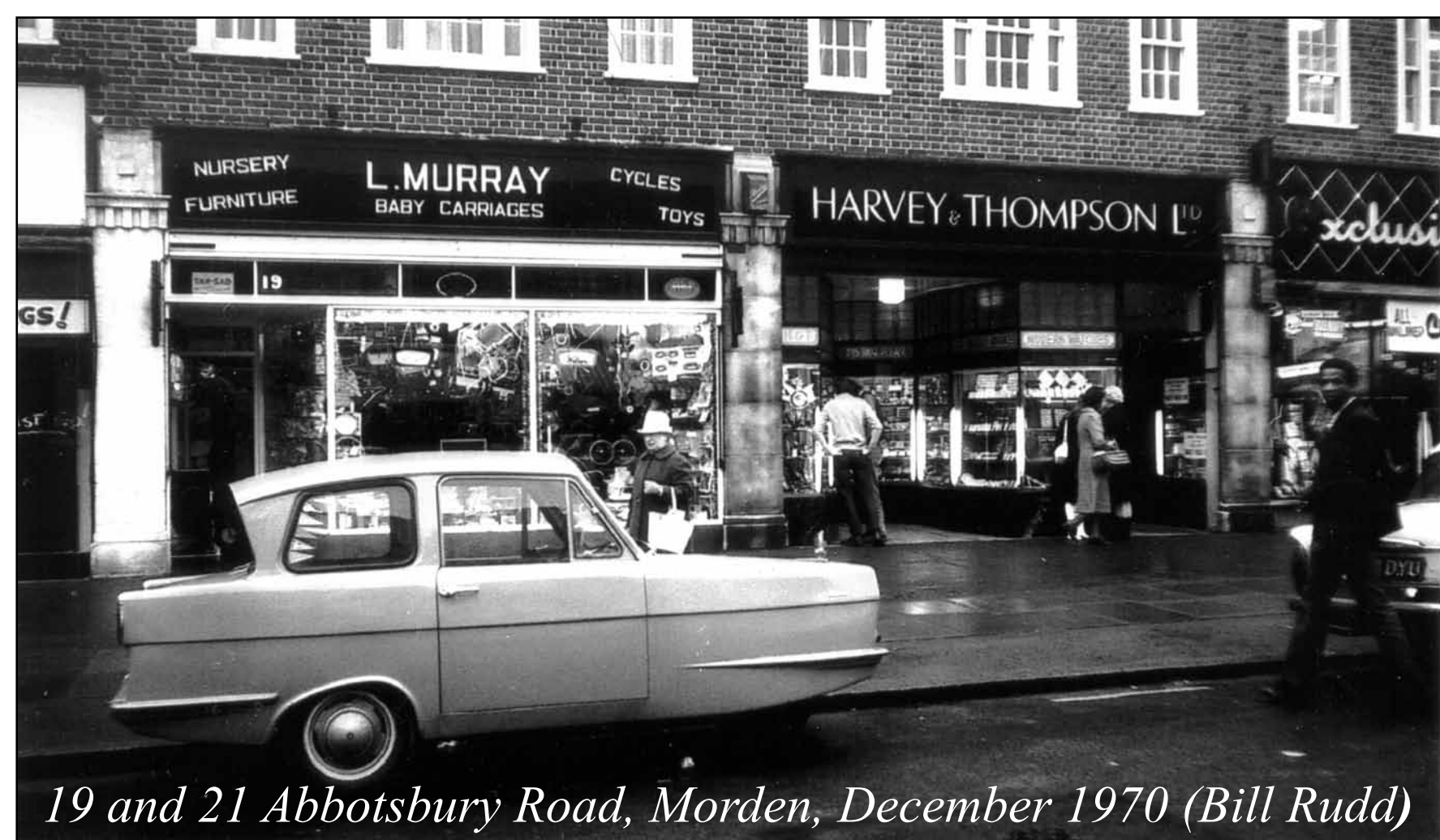


My Dad bought a Silvercross pram for my first daughter from this pram shop in Abbotsbury Road, in 1961. It was then used for my second daughter in 1964. Then a friend borrowed it when I had finished with it, and then my sister had it for her last child in 1970.

Mavis

Morden got its first post office in 1891 in Central Road. The next was in London Road, by 1903, in one of the new-built Crown shops near the old Crown inn. In 1928 it was at 1 Mellish's Terrace, a corner shop in London Road. The office at No.25 Abbotsbury Road opened in 1958. It took up two shop fronts, leaving access to Flat 27 on the front right-hand side. The large space at the back of the post office allowed vans carrying mail and security vehicles carrying money a safe place that could be secured.

Bill



19 and 21 Abbotsbury Road, Morden, December 1970 (Bill Rudd)



Bill Rudd, 1970



25 Abbotsbury Road in 1992 (Bill Rudd)



Opened in 1932 as the independent Morden Cinema, it was part of the Odeon group by 1937. It had become a B&Q store by 1977 when this advert appeared. The site was later redeveloped, Iceland opening here on 18 October 1994.

Bill



c.2002

Please share your memories.
There are plenty of blank
speech bubbles!