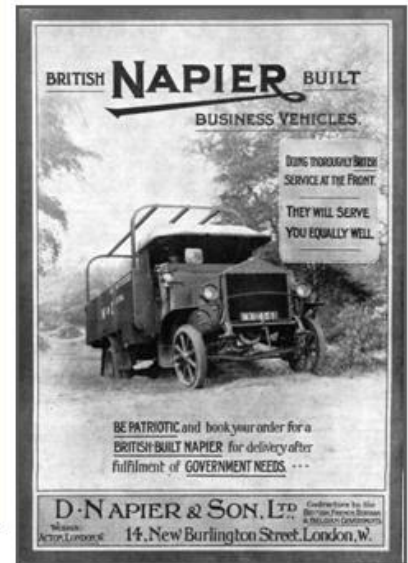
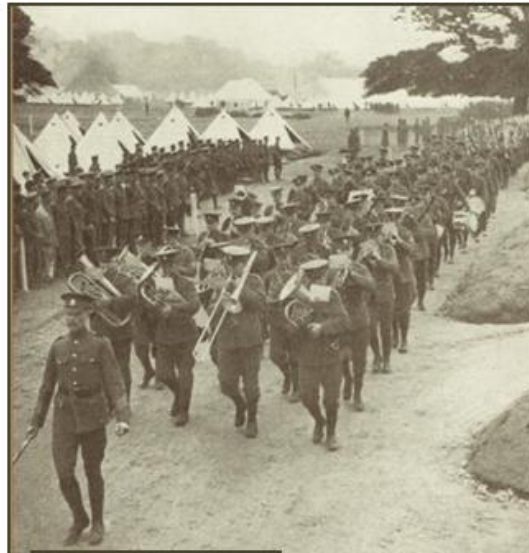
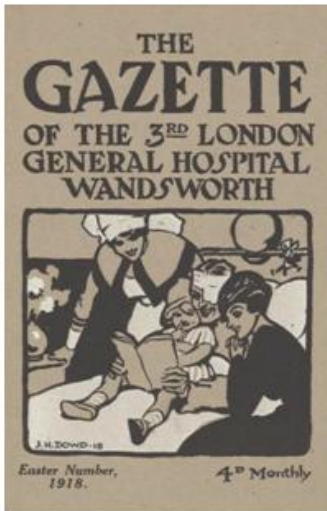


38th West London Local History Conference

The Impact of the 1914-18 War on West London

on Saturday, 24 March 2018



UNIVERSITY OF WEST LONDON
Boston Manor Rd, Brentford TW8 9GB

Tickets £15.00

**available only in advance from sponsoring societies or by post from
J McNamara, 31B Brook Rd South, Brentford TW8 ONN**

Please send cheque to 'West London Local History Conference' & SAE

Conference sponsored by the local history societies for Acton, Barnes & Mortlake,
Brentford & Chiswick, Fulham & Hammersmith, Hounslow, Little Ealing, Richmond,
Twickenham, Wandsworth and the West Middlesex Family History Society

The 38th West London Local History Conference

THE IMPACT of the 1914-18 WAR on WEST LONDON

PROGRAMME

This year's speakers share the results of their research to mark the centenary of the end of the First World War. They will describe how the War affected individuals, communities, organisations, businesses and the local landscape.

- 9.30 **Doors open** for viewing of sponsoring societies' book stalls
- 10.00 Welcome by **Val Bott**, chairman of the organising committee
- 10.05 **The conference theme**
introduced by **Neil Robson**, Editor, *Wandsworth Historian*
- 10.15 **When the War Began: responses in Acton, Brentford, Chiswick and Hounslow**
John Grigg, labour historian, using his research in local newspapers
- 10.50 **COFFEE**
- 11.25 **The cost in lives of the men of 'The Alberts', a small community in Richmond**
Valerie Boyes, local historian & former lecturer in History Education
- 12.00 **World War I's Legacy in Fulham & Hammersmith**
Keith Whitehouse, Chairman, Fulham & Hammersmith Historical Society
- 12.30 **Injured bodies, broken hearts, damaged businesses**
Personal stories revealing the impact of war, read by the organising committee
- 1.00 **LUNCH**
- Afternoon session chaired by **Neil Robson**
- 2.00 **Women workers, tribunals, memorials**
Historical documents on our theme, read by the organising committee
- 2.45 **Feltham: how war transformed a village into an industrial suburb**
James Marshall, Hounslow's Local Studies Librarian
- 3.20 **TEA**
- 3.55 **Queen Mary's Hospital, Roehampton: the pioneering treatment of war injuries**
Tom Stanier introduces a showing of his centenary film
- 4.25 **Summary** of the day's proceedings
- 4.30 **Conference ends**

The university's Brentford Campus lies at the NW corner of the Boston Manor Road/A4 junction, 10 minutes' walk from Boston Manor Station (Piccadilly Line) and Brentford Station (SWR), with free parking on site. It lies beside the M4 below the flyover. The building is entirely wheelchair accessible.

Your ticket includes *morning coffee* and *afternoon tea*. However the refectory will open specially for us, offering coffee on arrival and sandwiches for lunch. You are also welcome to bring a packed lunch if you prefer.