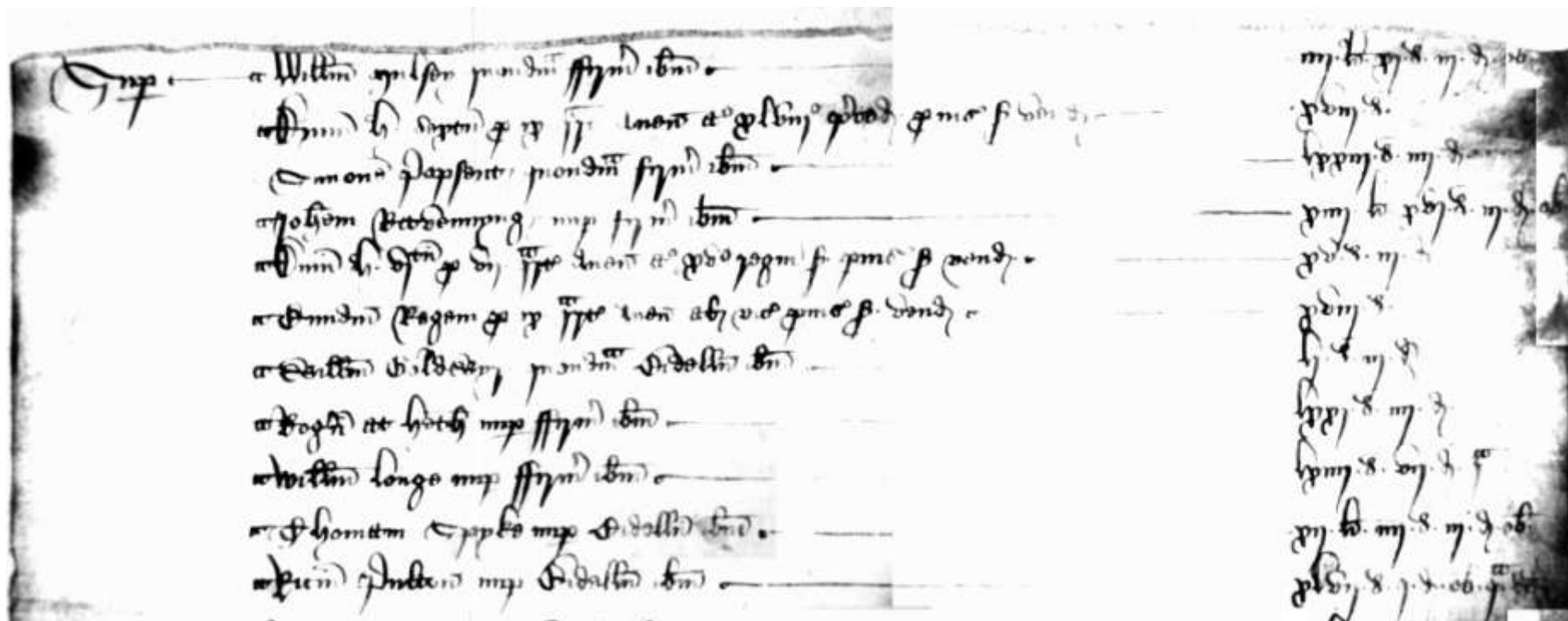
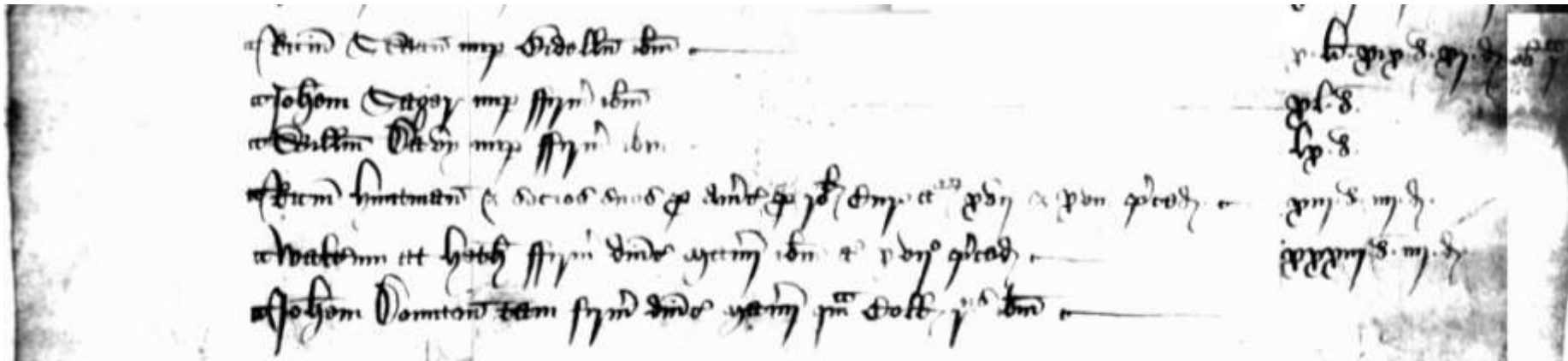


[A fragment from an account roll of 1476-77]

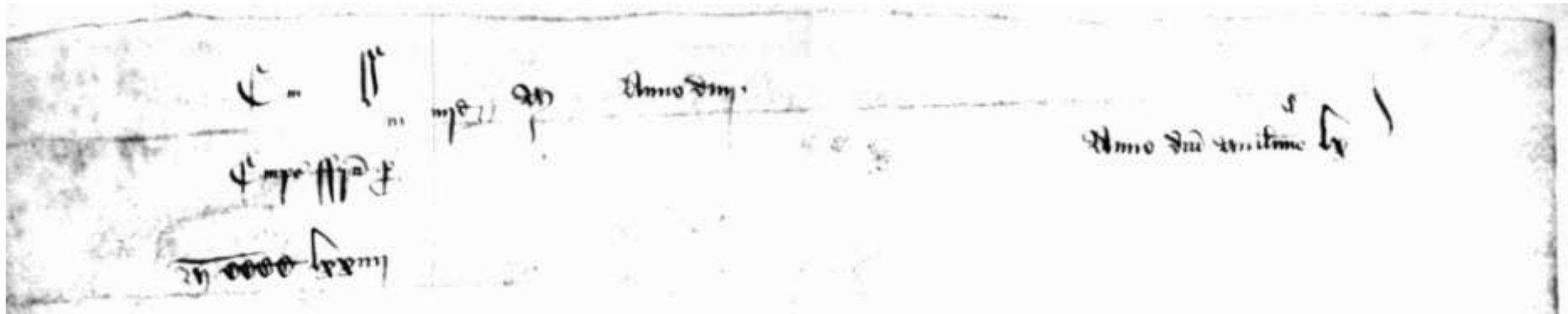


<p><b>Against</b> { William Mulseye formerly farmer.                  { The Lord H VI for 9 quarters oats sold to his purveyors 48 years preceding                  { Simone Popsent formerly farmer at the same place                  { John Ravennyng' late farmer at the same place                  { The Lord H VI for 7 quarters oats sold to his purveyors 15<sup>th</sup> year of his reign                  { The same King for 9 quarters oats sold to his purveyors on other occasions                  { William Goldwyr formerly beadle at the same place                  { Roger at Heth late farmer at the same place                  { William Longe late farmer at the same place                  { Thomas Spyke late beadle at the same place                  { Richard Pulton late beadle at the same place</p>	<p>£4 11s 3½d.                  18s.                  73s 4d.                  £14 16s 3½d.                  15s 3d.                  18s.                  51s 3d.                  71s 4d.                  64s 7¼d.                  £12 4s 3½d.                  47s 1¾d.</p>
---	---



{ Richard Swan late beadle at the same place	£10	19s	11¾d.
{ John Sager late farmer at the same place		40s.	
{ William Davy late farmer at the same place		60s.	
{ Richard Huntman' and his fellows for amercements by roll of court 17 and 18 years preceding		13s	4d.
{ Walter at Heth farmer of the demesne of the manor at the same place for 17 years preceding		33s	4d.
{ John Dounton' both farmer of the demesne of the manor and rent collector at the same place			[blank]

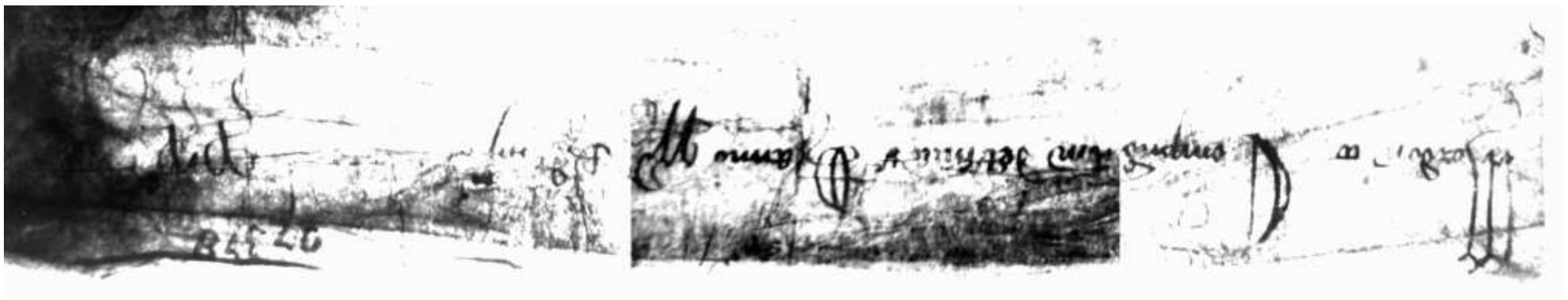
DORSE.



----- 4d ----- year of the lord.

Wheat bought for year of the lord ----- 60\*

1474



Morden Account of John Attwelle for the 19<sup>th</sup> year of the reign of King Edward IV.

\* These appear to be jottings.